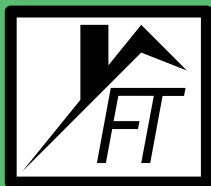


FT SYNTHETICS[®]

We Make Roofing Safer

Self-Adhered Water Proofing Membranes



FT SYNTHETICS[®]

We Make Roofing Safer

Distributed by:

FT Synthetics Inc.

26977 - 56 Ave, Langley, B.C. Canada V4W 3Y2

Phone: 604-594-3439 Toll Free: 1-844-353-9839

Fax: 604-594-3589 | Email: info@ftsyn.com | www.ftsyn.com

ABOUT FT SYNTHETICS



FT Synthetics is a fully integrated manufacturer. This allows for complete control over cost, delivery, and consistency of quality. FT Synthetics serves a global market for synthetic roofing underlayments and associated construction products. Our founders have over three decades of experience manufacturing and distributing roofing products with a record of delivering exceptional materials and efficient customer service. Thorough research and innovative product development has allowed for a unique and industry leading product range which is revolutionizing the industry.

FT Synthetics consistently provides high quality products using advanced equipment for; non-wovens manufacturing, weaving, coating, adhesive application, lamination and printing. Our commitment to quality is ensured using product and process certification via Intertek as our third party auditor.

Intertek



GRIPSPOT™ TECHNOLOGY



GRIPSPOT™ Technology provides a superior slip resistant walking surface for the ultimate in work place safety. The raised fibrous grip spots provide both traction as well as flow channels for shedding water and allowing faster dry times. GRIPSPOT™ slip resistant technology works under all conditions; wet, dusty, hot, cold, frosty, or dry.



Cobalt Ultra



Komodo BSA



FT Butyl MP



Platinum HTB

COBALTTM Ultra

COBALT Ultra is an extreme weather conditions self-adhering peel and stick roofing underlayment designed for sloped roof applications to help protect against water infiltration from ice dams and wind driven rain. It features a high strength asphalt free synthetic adhesive peel and stick backing. Cobalt Ultra is designed for use under; asphalt shingles, concrete and clay tiles, shakes, synthetic shingles, primed cedar shakes, and all types of metal roofing including high temperature applications such as copper, zinc, and Cor-Ten® roofing panels located in high altitude and southern regions.



- ▶ GRIPSPOT™ slip resistant walking surface - safer, reduces fatigue
- ▶ Chemically compatible with low slope roofing materials such as EPDM & TPO
- ▶ Low install adhesion below freezing **-4°F (-20°C)** and rising
- ▶ 180 day UV resistance, Limited Lifetime Warranty
- ▶ Nail Sealable - meets and exceeds ASTM D1970
- ▶ Easy release double sided silicone-treated split-release liner

**HIGH
TEMP**
THERMAL STABILITY
300 F/149 C

COBALT ULTRA

Specification & Standard	Typical Values
Length width per roll	67 ft (20.4m) 36 in (91.4 cm)
Weight sq. ft. per roll	28 lbs (13 kg) 200 sq.ft.
36 Rolls per pallet (48" x 48") 36 pallets per truckload 1296 rolls per truck	
Walking surface	GRIPSPOT™ slip resistant
Nail sealability - ASTM D1970	Pass
Permeability - ASTM E96	<0.05 Perms
Minimum thickness - ASTM D5147	41 mils (1.04 mm)
Tensile strength MD CD - ASTM D1970	95 lbf/in 90 lbf/in
Elongation - ASTM D1970	>104%
Lap seam, waterproof integrity – ASTM D1970	Pass
Tear resistance MD CD - ASTM D1970	70 lbf 60 lbf
Low temperature flexibility - ICC AC48	Pass
Adhesion to Plywood@75°F(23°C) 40°F(4.4°C) - ASTM D1970	82 lbf/ft 81 lbf/ft
Adhesion to Galv Metal@75°F(23°C) 40°F (4.4°C) - ASTM D1970	95 lbf/ft 90 lbf/ft
Thermal stability	300°F (149°C)
Min installation temperature	-4°F (-20°C)
UV resistance	180 days
Limited warranty	Lifetime

The Data shown above is based on the test averages and independent test reports. There can be a +/-10% variation in the individual test results. This report should not be considered as a warranty for the manufacturer. The manufacturer is not responsible for the misrepresentation or misinterpretation of the Data by the reader. Find out more call 1-844-353-9839 or visit www.ftsyn.com. The Cobalt Ultra and GRIPSPOT™ logos are trademarks of FT Synthetics Inc.



Cobalt Ultra Meets or exceeds the following code standards: ASTM D1970, ASTM D226 Type I&II, ASTM D4869, CAN/CSA A123.3, CAN/CSA A220.1, FBC #FL31710, Class A Fire ASTM E 108, CCRR-0356, AC-48 acceptance criteria for self adhered underlayments used as ice and water barriers.

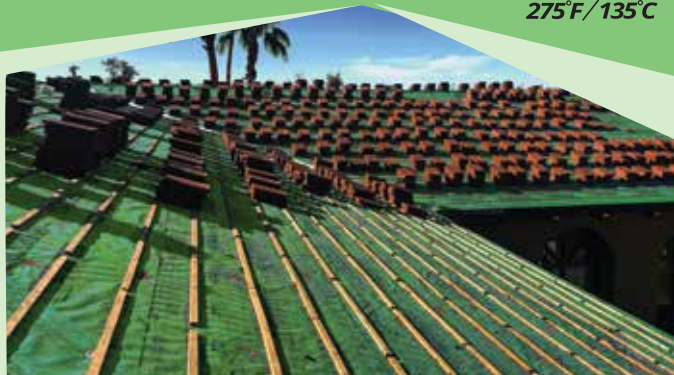


BUTYL - MP

Multipurpose waterproofing membrane

HIGH
TEMP
THERMAL STABILITY
275°F / 135°C

FT Butyl MP is a high temperature self adhered waterproofing membrane designed for steep slope roofing. It features *Traction Grip* an embossed reinforced polyester walking surface that is engineered for extreme environment tear strength, and applications requiring heavy foot traffic and longer installation times. It offers the ultimate bond strength to your roof deck with an advanced 100% butyl rubber adhesive. FT Butyl MP is a multi-purpose product designed for use under; residential or commercial metal, adhesive foam set or mechanically attached concrete or clay tiles, primed cedar shakes, and asphalt or composite shingles.



- ▶ 100% Butyl adhesive, thermal stability to 275°F(135°C)
- ▶ *Traction Grip* embossed walking surface
- ▶ Polyset[®] and Tilebond[®] approved for adhesive foam set tile applications
- ▶ Chemically compatible with low slope roofing materials such as EPDM and TPO
- ▶ Nail sealable - meets and exceeds ASTM D1970

FT Butyl MP – Multi-purpose waterproofing membrane

Specification & Standard	Typical Values
Length width per roll	67 ft (20.4m) 36 in (91.4 cm)
Weight sq. ft. per roll	44 lbs (20 kg) 200 sq.ft.
25 Rolls per pallet (48" x 48") 28 pallets per truckload 700 rolls per truck	
Slip resistant walking surface	Embossed <i>Traction Grip</i>
Release liner	Double sided silicone treated split-release liner
Nail sealability - ASTM D1970	Pass
Permeability - ASTM E96	<0.035 Perms
Minimum thickness - ASTM D1970	61 mils (1.55 mm)
Tensile strength MD CD - ASTM D1970	75lbf /in 55lbf /in
Elongation: D1970	>100%
Lap seam – waterproof integrity – D1970	Pass
Tear resistance MD CD - ASTM D1970	115 lbf 105 lbf
Low temperature flexibility - ASTM D1970	Pass
Adhesion to Plywood@75°F(23°C) 40°F(4.4°C) - ASTM D1970	70 lbf/ft 60 lbf/ft
Adhesion to Galv Metal@75°F(23°C) 40°F(4.4°C) - ASTM D1970	85 lbf/ft 80 lbf/ft
Thermal stability	275°F (135°C)
Installation temperature	25°F (-4°C) and rising
UV resistance	180 days
Limited warranty	Lifetime

The data shown above is based on the test averages and independent test reports. There can be a +/-10% variation in the individual test results. This report should not be considered as a warranty for the manufacturer. The manufacturer is not responsible for the misrepresentation or misinterpretation of the data by the reader. Find out more please call 1-844-353-9839 or visit www.ftsyn.com. The Butyl MP and Traction Grip logos are trademarks of FT Synthetics Inc.



Product meets or exceeds all required building codes: ASTM D1970, v ASTM D226 Types I & II, ASTM D4869, CAN/CSA A123.3, CAN/CSA A220.1, Class A Fire ASTM E108, Texas Department of Insurance



**HIGH
TEMP**
THERMAL STABILITY
270 F/132 C

KOMODO BSA is a high temperature self adhered waterproofing membrane designed for use in steep slope roofing. It features GRIPSPOT™ a patented slip resistant walking surface that provides improved slip resistance in all weather conditions. KOMODO BSA offers the ultimate bond strength to your roof deck with an advanced 100% butyl rubber adhesive. It is designed for use under; residential or commercial metal, mechanically attached concrete or clay tiles, primed cedar shakes, and asphalt or composite shingles.



- ▶ 100% Butyl adhesive chemically compatible with low slope roofing materials such as EPDM and TPO
- ▶ Deck adhesion up to 3X Stronger than standard modified bitumen products
- ▶ Low installation temperature 25°F(-4°C) and rising
- ▶ Longer shelf life - up to 18 months
- ▶ Nail Sealable- meets and exceeds ASTM D1970
- ▶ Easy to remove double sided silicone treated split-release liner

KOMODO BSA – Waterproof Membrane

Specification & Standard	Typical Values
Length width per roll	67 ft (20.4m) 36 in (91.4 cm)
Weight sq. ft. per roll	44 lbs (20 kg) 200 sq.ft.
36 Rolls per pallet (48" x 48") 28 pallets per truckload	1008 rolls per truck
Walking surface	GRIPSPOT™ slip resistant
Release liner	Double sided silicone treated split-release liner
Nail sealability - ASTM D1970	Pass
Permeability - ASTM E96	<0.05 Perms
Minimum thickness - ASTM D1970	41 mils (1.04 mm)
Tensile strength MD CD - ASTM D1970	120 lbf/in 110 lbf/in
Elongation: ASTM D1970	>100%
Lap seam – waterproof integrity – ASTM D1970	Pass
Tear Strenght MD CD - ASTM D1970	140 lbf 120 lbf
Low temperature flexibility - ASTM D1970	Pass
Adhesion to plywood@75°F(23°C) / 40°F(4.4°C)-ASTM D1970	70 lbf/ft 60 lbf/ft
Adhesion to Galv metal @75°F(23°C) / 40°F(4.4°C)-ASTM D1970	85 lbf/ft 80 lbf/ft
Thermal stability	270°F (132°C)
Installation temperature	25°F (-4°C) and rising
UV resistance	180 days
Limited warranty	Lifetime

The data shown above is based on the test averages and independent test reports. There can be a +/-10% variation in the individual test results. This report should not be considered as a warranty for the manufacturer. The manufacturer is not responsible for the misrepresentation or misinterpretation of the data by the reader. Find out more please call 1-844-353-9839 or visit www.ftsyn.com. The Komodo BSA and GRIPSPOT™ logos are trademarks of FT Synthetics Inc.



ICE AND WATER PROTECTION



Product meets or exceeds all required building codes: ASTM D1970, FBC FL#23090, ASTM D226 Types I & II, ASTM D4869, CAN/CSA A123.3, CAN/CSA A220.1, Class A Fire ASTM E108, Texas Department of Insurance



PLATINUM HT-B

FT SYNTHETICS

HIGH
TEMP
THERMAL STABILITY
265°F/129°C

PLATINUM HTB is a high temperature self-adhered waterproofing membrane made with an advanced Black Butyl rubber adhesive formulation and is designed for use as secondary ice and water protection in steep slope roofing applications. It offers premium protection against water infiltration from snow, ice dams, and wind driven rain. It can be used under most primary roofing materials such as residential or commercial metal, mechanically attached concrete or clay tiles, primed cedar shakes, and asphalt or composite shingles.



- ▶ GRIPSPOT™ slip resistant walking surface - safer, reduces fatigue
- ▶ Install adhesion at 30°F (0 °C) and rising
- ▶ 180 day UV resistance, Limited Lifetime Warranty
- ▶ Nail Sealable - meets and exceeds ASTM D1970
- ▶ Easy release silicone-treated split-release liner

PLATINUM HTB

Specification & Standard	Typical Values
Length width per roll	67 ft (20.4m) 36 in (91.4 cm)
Weight sq. ft. per roll	40 lbs (18 kg) 200 sq.ft.
36 Rolls per pallet (48" x 48") 28 pallets per truckload 1008 rolls per truck	
Walking surface	GRIPSPOT™ slip resistant
Release liner	Silicone treated split-release liner
Nail sealability - ASTM D1970	Pass
Permeability - ASTM E96	<0.05 Perms
Minimum thickness - ASTM D1970	41 mils (1.04 mm)
Tensile strength MD CD - ASTM D1970	120 lbf/in 110 lbf/in
Elongation - ASTM D1970	>90%
Lap seam, waterproof integrity – ASTM D1970	Pass
Tear resistance MD / CD - ASTM D1970	140 lbf 120 lbf
Low temperature flexibility - ASTM D1970	Pass
Adhesion to plywood@75°F(23°C) 40°F(4.4°C)-ASTM D1970	55 lbf/ft 23 lbf/ft
Adhesion to Galv metal @75°F(23°C) 40°F(4.4°C)-ASTM D1970	67 lbf/ft 51 lbf/ft
Thermal stability	265°F (129.4°C)
Installation temperature	32°F (0°C) and rising
UV resistance	180 days
Limited warranty	Lifetime

The Data shown above is based on the test averages and independent test reports. There can be a +/-10% variation in the individual test results. This report should not be considered as a warranty for the manufacturer. The manufacturer is not responsible for the misrepresentation or misinterpretation of the Data by the reader. Find out more call 1-844-353-9839 or visit www.ftsyn.com. The Platinum HTB and GRIPSPOT™ logos are trademarks of FT Synthetics Inc.



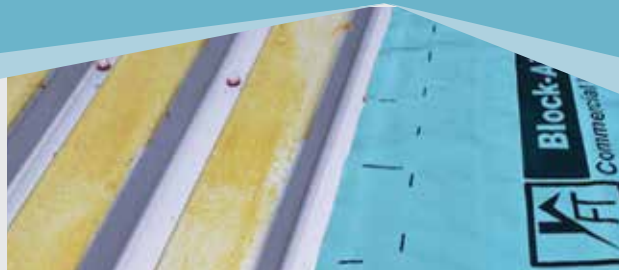
Product meets or exceeds all required building codes: ASTM D1970, ASTM D226 Types I & II, ASTM D4869, CAN/CSA A123.3, CAN/CSA A220.1, Florida Building Code# FL23090, Class A Fire ASTM E108, Texas Department of Insurance, RCABC Roofstar



Block-Aide® Roof

Self Adhered Vapor Barrier

FT Block-Aide is a self-adhered vapor barrier membrane that combines a durable tri-laminate low density polyethylene facer with an advanced butyl rubber adhesive to create a *Commercial Grade Vapor Barrier* with significantly increased adhesion performance and a slip resistant embossed walking surface. It is designed to be self-adhered directly to a properly prepared; steel, gypsum, cement board, concrete, OSB, or plywood roof deck. Its main function is to serve as a full coverage vapour barrier as part of a roof assembly. It can be used as a temporary roof membrane for upto 180 days.



- ▶ High tack Butyl adhesive with thermal stability up to 260°F (126.7°C).
- ▶ Membrane self seals around mechanical fasteners and passes ASTM D1970 for nail seal-ability.
- ▶ Reinforced with Polyethylene cross laminated scrim.
- ▶ Easy to peel silicone treated split release liner allows for easy removal and fast installation.
- ▶ Low Installation temperature 14°F (-10°C) with primer.

FT Block-Aide Roof: Technical Data

Physical Property	Standard	Result
Roll Size (Gross)		5 square (500 sqft)
Roll Length x Width Roll weight		134ft x 45in 86lb (39 kg)
UV Resistance	ASTM G154	180 Days
Tensile strength MD CD	ASTM D1970	80 lbf/in 75 lbf/in
Elongation	ASTM D1970	>30%
Tear strength MD CD	ASTM D1970	120 lbf 105 lbf
Adhesion to plywood @75°F @40°F	ASTM D1970	75 lbf/ft 65 lbf/ft
Adhesion to metal @75°F @40°F	ASTM D1970	85 lbf/ft 80 lbf/ft
Adhesion to gypsum @75°F @40°F	ASTM D1970	70 lbf/ft 65 lbf/ft
Lap Adhesion	ASTM D1876	75 lbf/ft
Lap & Nail Sealability	ASTM D1970	Pass
Water shower exposure	ASTM D4869	Pass
Permeability	ASTM E96	<0.03 Perms
Water absorption	ASTM D5147	<0.1%
Air Permeability	ASTM E2178	<0.001 L/s. m
Nominal Thickness	ASTM D1970	31 mils
Low Temperature Flexibility	ASTM D5147	-58 °F (-50 °C)

The data shown above is based on the test averages and independent test reports. There can be a +/-10% variation in the individual test results. This report should not be considered as a warranty for the manufacturer. The manufacturer is not responsible for the misrepresentation or misinterpretation of the data by the reader. The Block-Aide and GRIPSPOT™ logos are trademarks of FT Synthetics Inc.

Embossed Slip Resistant walking surface

X4
Magnification



FL#41124

Meets or exceeds the following code standards:
ASTM D1970, ASTM E84, ASTM E283, ASTM E331,
CSA123.3, AAMA 501.1, UL# R40758, FBC# FL41124,
CAN ULC-S42, CAN ULC-S41 & ASTM E2178 (Pending)



Block-Aide[®] Wall^{NP}

Self Adhered Vapor Barrier

Block-Aide Wall NP is a self-adhered vapor barrier membrane that combines a durable tri-laminated polyethylene reinforced facer with an advanced butyl rubber adhesive to create a superior performing non-permeable wall vapor barrier with significantly increased adhesion performance.

Block-Aide Wall NP is designed to be self-adhered directly to a properly prepared wall assembly and will adhere to most substrates without primer; steel, gypsum, cement board, primed concrete, OSB, or plywood. Its main function is to serve as a full coverage vapor barrier for up to 180 days exposure.



- ▶ High temperature stability for environments up to 260°F(126.7°C)
- ▶ Superior adhesion compared to standard modified bitumen products
- ▶ Extremely low installation temperature 25°F(-4°C) and rising
- ▶ Advanced adhesive formulation will not crack or dry out and offers up to 18 months shelf life without significant adhesive strength reduction

FT Block-Aide® Wall™ : Technical Data

Physical Property	Standard	Result
Roll Size (Gross)		2.25 square (225 sqft)
Roll Length x Width / Roll weight		75ft x 36in / 37lb (17 kg)
UV Resistance	ASTM G154	6 Months
Tensile strength MD/CD	ASTM D1970	80 lbf/in / 75 lbf/in
Elongation MD/CD	ASTM D1970	>30%
Tear strength MD/CD	ASTM D1970	120 lbf / 115 lbf
Adhesion to plywood @75°F /@40°F	ASTM D1970	75 lbf/ft / 65 lbf/ft
Adhesion to metal @75°F /@40°F	ASTM D1970	85 lbf/ft / 80 lbf/ft
Adhesion to gypsum @75°F /@40°F	ASTM D1970	70 lbf/ft / 65 lbf/ft
Lap Adhesion	ASTM D1876	75 lbf/ft
Nail Sealability	ASTM D1970	Pass
Water shower exposure	ASTM D4869	Pass
Permeability	ASTM E96	<0.03 Perms
Water absorption	ASTM D5147	<0.1%
Air Permeability	ASTM E2178	<0.001 L/s* m2
Nominal Thickness	ASTM D1970	31 mils
Low Temperature Flexibility	ASTM D5147	-58 °F (-50 °C)

The data shown above is based on the test averages and independent test reports. There can be a +/-10% variation in the individual test results. This report should not be considered as a warranty for the manufacturer. The manufacturer is not responsible for the misrepresentation or misinterpretation of the data by the reader. Block-Aide Wall logo is a registered trademark of FT Synthetics Inc.



Meets or exceeds the following code standards:
 ASTM E84, ASTM E283,
 ASTM E331, ASTM E2178,
 AAMA 501.1, CAN/ULC-S741/S742,
 NFPA 285 (in progress)

ESTIMATED COST FOR THE HOMEOWNER



20 Square Roof

COBALT ULTRA: _____
FT BUTYL MP: _____
KOMODO BSA: _____
PLATINUM HTB: _____



40 Square Roof

COBALT ULTRA: _____
FT BUTYL MP: _____
KOMODO BSA: _____
PLATINUM HTB: _____



FT SYNTHETICS®
We Make Roofing Safer

FT Synthetics Product Selection Guide

Application / For use under	Cobalt Ultra	FT Butyl-MP	Komodo BSA	Platinum HTB	HYDRA	FT Platinum	FT Gold	FT Silver
Asphalt and synthetic shingles, primed cedar shakes	Ultimate	Outstanding	Outstanding	Outstanding	Best	Best	Better	Good
Concrete and clay tiles	Ultimate	Outstanding	Outstanding	Outstanding	Best	Better	Good	0
Cedar shakes - raw/uncoated	0	0	0	0	Ultimate	0	0	0
Architectural metal roofs/ Residential Roof	Ultimate	Outstanding	Outstanding	Best	Outstanding	Better	Good	Good
Copper, Zinc and Cor-Ten® Metal roofing	Ultimate	Outstanding	Outstanding	Best	Best	Better	Good	0
Copper, Zinc and Cor-Ten® metal roofing in desert Southwest USA or high altitude climates	Ultimate	Outstanding	0	0	Best	Better	0	0
Ice dam protection	Ultimate	Outstanding	Outstanding	Best				
Breathable roof system application - High temperature swings / High moisture environments					Ultimate			

www.ftsyn.com

0

Product may be able to be used, check local building code but not best choice