

# INSTALLATION INSTRUCTIONS



## STEP 1



Black side down



Roll out product with grey grouted side facing up, and black chemically treated slip resistant surface facing down. The top GripSpot™ enhanced vented floor surface provides liquid absorption as well as an enhanced slip resistant walking surface.

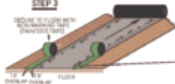
## STEP 2

Cut Gatorshield with utility knife or scissors.



LIFT GATORSHIELD UP AWAY FROM FLOOR TO CUT

## STEP 3



CUTLINE EACH SIDE

Secure Gatorshield to the floor on both sides using a 1" wide non-marking tape. Overlap the tape 1" onto the Gatorshield using the dotted line perimeter the product. This will allow for 1" of tape to be applied to the flooring surface.



FT SYNTHETICS

[www.FtSyn.com](http://www.FtSyn.com)

1 844-353-0639

